

Flotation Products

Pontoons

www.nautilusfloats.com



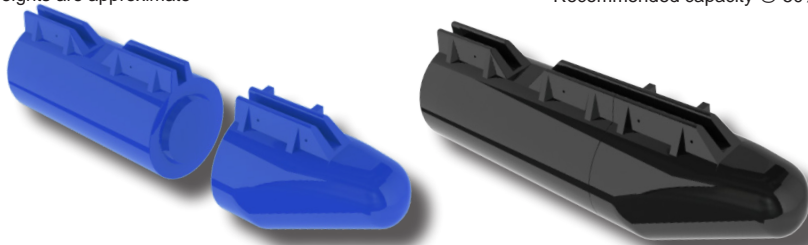
Nautilus Floats continues to lead in innovative design, materials, manufacturing quality, and value. All products are molded as one piece from tough, impact resistant high density polyethylene which will withstand sub zero temperatures. The molded product will not rust or corrode and is resistant to most chemicals. A UV stabilizer is added to the polyethylene for excellent resistant to sunlight (UV). The pontoon design provides stability and reduced resistance to waves, currents, and winds. Additionally, all Nautilus Floats flotation products are filled with foam meeting US Coast Guard specifications.

Dura Float Standard Series Modular Pontoon

Item #	Color	Description	Length in (mm)	Width in (mm)	Weight lbs (kg)	Recommended Capacity lbs (kg)*
45540	Black	STD-17 Body	35" (889)	17" (432)	23 (10)	130 (58)
45544	Blue	STD-17 Body	35" (889)	17" (432)	23 (10)	130 (58)
45550	Black	STD-17 Nose Cone	25" (635)	17" (432)	14 (6)	45 (20)
45554	Blue	STD-17 Nose Cone	25" (635)	17" (432)	14 (6)	45 (20)

* All dimensions and weights are approximate

*Recommended capacity @ 50% submersion.



Features

- Integral flanges are molded to simplify attachment of the pontoon.
- Bolt holes are molded-in and require no drilling.
- Dock width and length is determined by your requirements.
- Nose cones available for navigable structure.
- Pontoons are manufactured in sections, allowing you to create any size pontoon for your specific application.

Dura Float Gullwing Series Modular Pontoon

Item #	Color	Description	Length in (mm)	Width in (mm)	Weight lbs (kg)	Recommended Capacity lbs (kg)*
45470	Black	GW-36 Body	48" (1219)	36" (914)	135 (61)	854 (387)
45474	Blue	GW-36 Body	48" (1219)	36" (914)	135 (61)	854 (387)
45475	Black	GW-36 Nose Cone	50" (1270)	36" (914)	90 (40)	451 (204)
45476	Blue	GW-36 Nose Cone	50" (1270)	36" (914)	90 (40)	451 (204)
45480	Black	GW-26 Body	36" (914)	27" (686)	59 (26)	314 (142)
45484	Blue	GW-26 Body	36" (914)	27" (686)	59 (26)	314 (142)
45500	Black	GW-26 Nose Cone	36" (914)	27" (686)	36 (16)	150 (68)
45504	Blue	GW-26 Nose Cone	36" (914)	27" (686)	36 (16)	150 (68)
45450	Black	GW-17 Body	36" (914)	17" (432)	27 (12)	135 (61)
45454	Blue	GW-17 Body	36" (914)	17" (432)	27 (12)	135 (61)
45460	Black	GW-17 Nose Cone	26" (660)	17" (457)	14 (6)	55 (24)
45464	Blue	GW-17 Nose Cone	26" (660)	17" (457)	14 (6)	55 (24)

* All dimensions and weights are approximate

*Recommended capacity @ 50% submersion.



Dura Float Pontoons

The Dura Float Pontoons provide reliable flotation for:

- floating pumps
- instrument platforms
- survey vessels
- oil spills
- booms
- pipeline floats
- oceanographic floats
- work barges
- houseboats
- boats
- docks
- and other applications



View Our Complete Line of Nautilus Floats
www.nautilusfloats.com

Nautilus Floats, LLC • Phone: +1 325-646-4644 • Fax: +1 325-643-4644 • sales@nautilusfloats.com

Flotation Products

Pontoons

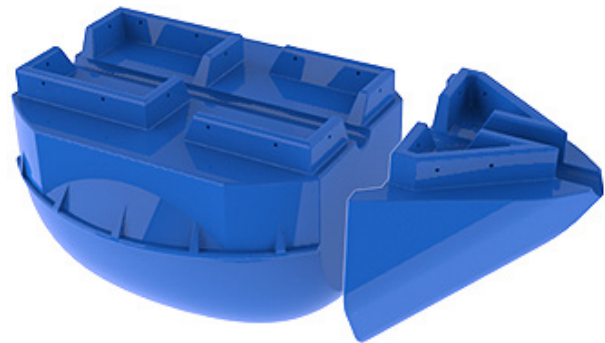
www.nautilusfloats.com

Super Pontoon

Item #	Color	Description	Length in (mm)	Width in (mm)	Weight lbs (kg)	Recommended Capacity lbs (kg)*
45570	Black	Super Body	60" (1524)	52" (1321)	192 (87)	1400 (635)
45572	Blue	Super Body	60" (1524)	52" (1321)	192 (87)	1400 (635)
45571	Black	Super Nose	32" (813)	43" (1092)	57 (25)	214 (97)
45571	Blue	Super Nose	32" (813)	43" (1092)	57 (25)	214 (97)

* All dimensions and weights are approximate

*Recommended capacity @ 50% submersion.



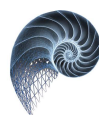
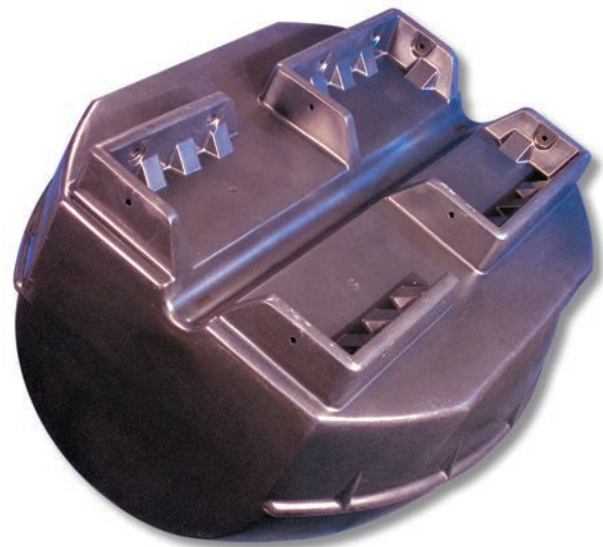
Super Pontoon

1400lbs of Flotation Capacity at 50% Submersion

The Super Pontoon provides super stability for super-sized installations.

It is great for barges, custom applications, marinas, floating restaurants, hotels, and dredging applications.

Unique nose cone design provides greater stability while easing displacement of water, performing exceptionally well in demanding wave or current environments by lessening structural fatigue.



NAUTILUS™ FLOATS

View Our Complete Line of Nautilus Floats
www.nautilusfloats.com